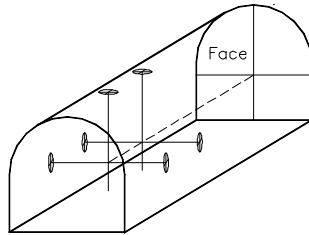




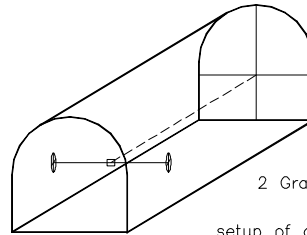
Shooting lines has never been easier nor more accurate

THE OLD WAY



Shooting lines with
Smoke marks and grade plugs

THE NEW WAY



2 Grade Plugs on walls

setup of drift laser scope
is anywhere on string

Shooting lines with
the Drift Scope

Benefits include:

- **Simple concept – easy to understand and implement**
- **Quicker surveyor and jumbo driller setup time**
- **Accurate, drift will stay on line and grade**
- **Adaptable to shoot line around machinery at face**
- **Inexpensive**

A tool for miners, foremen, geologists, engineers

The Drift Scope ^(pat.pend) is a new device designed to improve the speed and accuracy of shooting lines for tunnel advancement with a simple and effective method.

Specifications:

Distance – up to 300 feet
 Grade: Variable –25 to +25% (1% increments) or fixed
 Accuracy 1” over 100 feet repeatability
 The laser diode wave length 630-680 nm, Max. output < 5 mW,
 Class IIIA Laser Product.



Survey Notes

The drift scope projects a laser dot in a direction that is perpendicular to a string that it is hung onto. The drift scope is indexed such that the required grade is automatically attained. The surveyed points with spads are to be located square to the drift direction. Offsets are from the left or right spad. Dampened against wind.

Drift Scope Setup Procedure

1. Run string across the drift between the spads
2. Hang the Drift Scope any where on string (usually one foot from the left wall)
3. Go to the face and mark off laser dot with spray paint. **DONE!**

Try it! Contact us to obtain a demonstration unit for under \$500.



PAR Innovations Inc. 571 Loach's Road, Sudbury Ontario P3E 2R3 CANADA
 Phone (705) 522-7631 Fax (705) 671-3032 www.parinn.com info@parinn.com